

AFAP1-Y451 Antibody
Purified Rabbit Polyclonal Antibody (Pab)
Catalog # AW5348**Specification**

AFAP1-Y451 Antibody - Product Information

Application	WB,E
Primary Accession	Q8N556
Reactivity	Human
Predicted	Mouse, Rat
Host	Rabbit
Clonality	Polyclonal
Calculated MW	H=81,90;M=81;Rat=81 KDa
Isotype	Rabbit IgG
Antigen Source	HUMAN

AFAP1-Y451 Antibody - Additional Information**Gene ID** 60312**Antigen Region**
444-477**Other Names**

Actin filament-associated protein 1, 110 kDa actin filament-associated protein, AFAP-110, AFAP1, AFAP

Dilution

WB~~1:1000

Target/Specificity

This antibody is generated from a rabbit immunized with a KLH conjugated synthetic peptide between 444-477 amino acids from human.

Format

Purified polyclonal antibody supplied in PBS with 0.09% (W/V) sodium azide. This antibody is purified through a protein A column, followed by peptide affinity purification.

Storage

Maintain refrigerated at 2-8°C for up to 2 weeks. For long term storage store at -20°C in small aliquots to prevent freeze-thaw cycles.

Precautions

AFAP1-Y451 Antibody is for research use only and not for use in diagnostic or therapeutic procedures.

AFAP1-Y451 Antibody - Protein Information

Name AFAP1

Synonyms AFAP

Function

Can cross-link actin filaments into both network and bundle structures (By similarity). May modulate changes in actin filament integrity and induce lamellipodia formation. May function as an adapter molecule that links other proteins, such as SRC and PKC to the actin cytoskeleton. Seems to play a role in the development and progression of prostate adenocarcinoma by regulating cell-matrix adhesions and migration in the cancer cells.

Cellular Location

Cytoplasm, cytoskeleton, stress fiber

Tissue Location

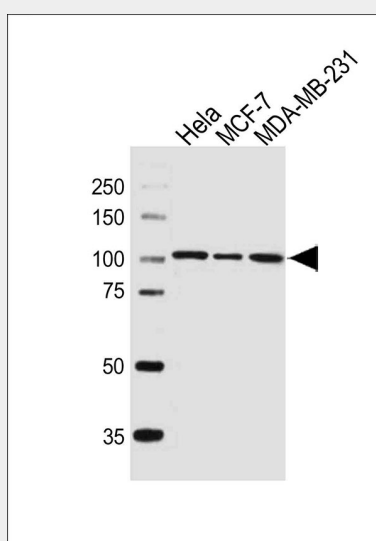
Low expression in normal breast epithelial cell line MCF-10A and in tumorigenic breast cancer cell lines MCF-7, T-47D and ZR-75-1. Highly expressed in the invasive breast cancer cell lines MDA-MB-231 and MDA-MB-435. Overexpressed in prostate carcinoma

AFAP1-Y451 Antibody - Protocols

Provided below are standard protocols that you may find useful for product applications.

- [Western Blot](#)
- [Blocking Peptides](#)
- [Dot Blot](#)
- [Immunohistochemistry](#)
- [Immunofluorescence](#)
- [Immunoprecipitation](#)
- [Flow Cytometry](#)
- [Cell Culture](#)

AFAP1-Y451 Antibody - Images



Western blot analysis of lysates from HeLa, MCF-7, MDA-MB-231 cell line (from left to right), using Phospho-AFAP1-Y451.ctrl (Cat. #AW5348). AW5348 was diluted at 1:1000 at each lane. A goat anti-rabbit IgG H&L (HRP) at 1:10000 dilution was used as the secondary antibody. Lysates at 20ug

per lane.

AFAP1-Y451 Antibody - Background

Can cross-link actin filaments into both network and bundle structures (By similarity). May modulate changes in actin filament integrity and induce lamellipodia formation. May function as an adapter molecule that links other proteins, such as SRC and PKC to the actin cytoskeleton. Seems to play a role in the development and progression of prostate adenocarcinoma by regulating cell-matrix adhesions and migration in the cancer cells.

AFAP1-Y451 Antibody - References

Han B.,et al.J. Biol. Chem. 279:54793-54801(2004).
Ota T.,et al.Nat. Genet. 36:40-45(2004).
Hillier L.W.,et al.Nature 434:724-731(2005).
Totoki Y.,et al.Submitted (MAR-2005) to the EMBL/GenBank/DDBJ databases.
Olsen J.V.,et al.Cell 127:635-648(2006).